



# LifeStart™

Starting with the very first breaths of life

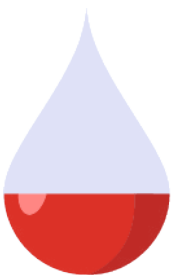
# Helping enhance outcomes

*from the **very first** breaths of life*

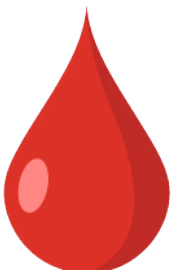
The LifeStart™ is a **versatile** bedside platform designed to help facilitate intact cord stabilisation and resuscitation. The LifeStart aims to help **improve outcomes**, starting with the very first breaths of life. Building on the standard of traditional resuscitation units, its **compact** profile allows bedside positioning for a variety of birthing situations, with the ability to accommodate needed equipment.



LifeStart can help facilitate Delayed Cord Clamping (DCC) to **enable placental transfusion** while stabilising the baby<sup>1</sup>. The Committee on Royal College of Obstetricians and Gynecologists<sup>1</sup> provides some of the following guidelines regarding the timing of clamping the umbilical cord after childbirth:



Immediate clamping stops the baby from receiving additional blood.<sup>1</sup>



Around 80-100ml of blood volume can be transferred to the baby.<sup>1</sup>

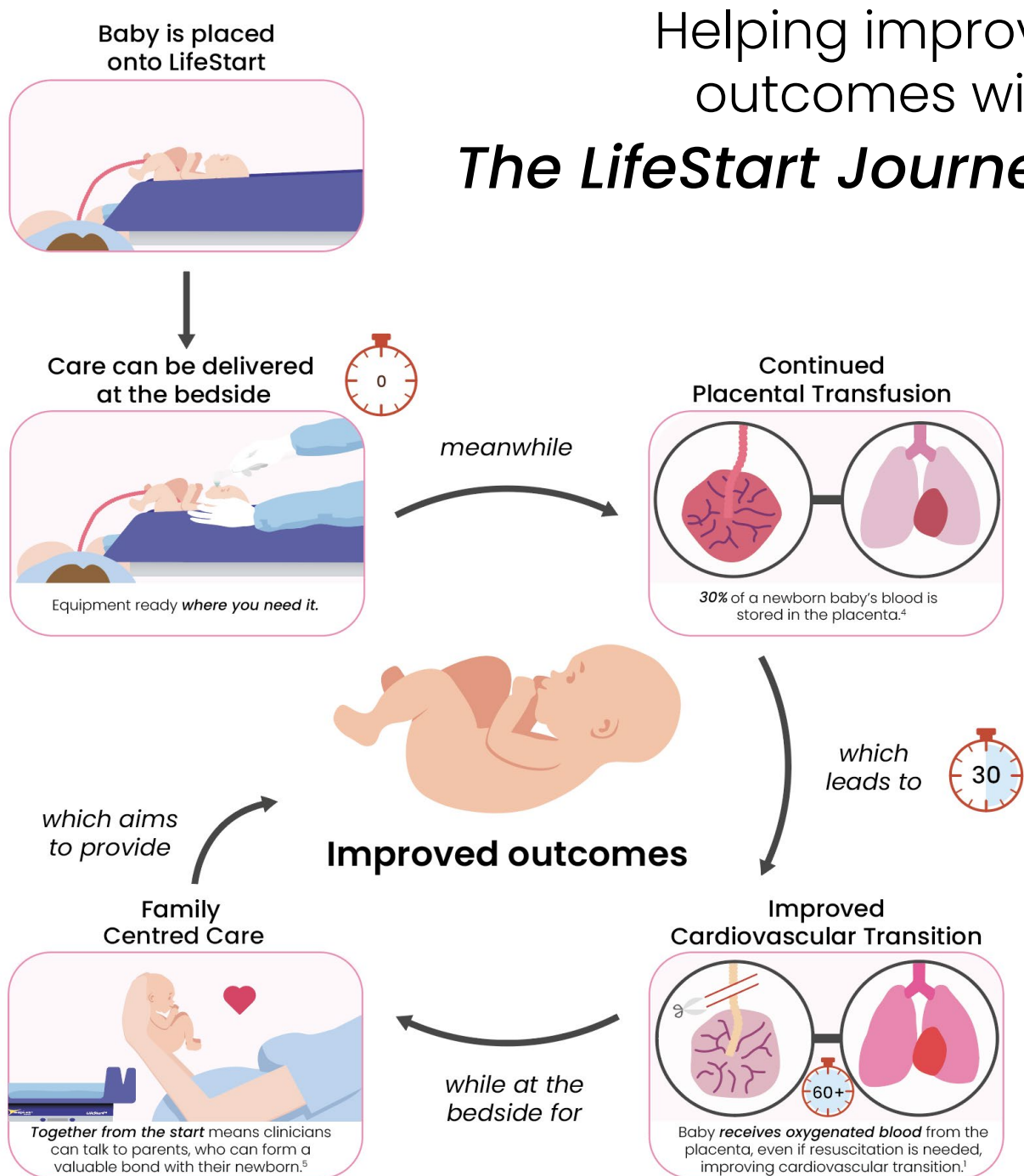
**1 in 10**  
**babies**  
are born  
**premature**  
worldwide<sup>2</sup>

Most babies can benefit from DCC, however studies have shown that preterm babies are the ones that can benefit the most.<sup>3</sup>

# Together from the start

with *The LifeStart Journey*

The LifeStart Journey was designed by **experienced** paediatricians, midwives, and obstetricians in the United Kingdom to help **overcome** the need to clamp the cord early for very vulnerable babies. It is designed to bring care to the bedside.



Helping improve outcomes with *The LifeStart Journey*

Outcome of  
keeping fam  
market lead  
**for over**



changing<sup>6</sup>.  
families closer<sup>5</sup> &  
living in the UK  
**10 years**



# People come first

*who, where, and how?*

The **ergonomic** design of the LifeStart can allow the parent, birth partner, and baby to **stay close** throughout stabilisation or resuscitation. This not only provides **comfort** and maintains the **valuable bond** between baby and parents, but **enhances communication** between clinical teams and parents.<sup>2</sup>

## baby

- Blood volume optimisation through DCC<sup>1</sup>
- Immediate access for care
- Allows baby to stay close to their family

## family

- Maintains the family bond<sup>5</sup>
- Informed and reassured
- Reduced stress<sup>5</sup>

## hospital

- Care where you need it
- Designed by experienced paediatricians, midwives, and obstetricians



The LifeStart has brought Delayed Cord Clamping in a very standardised way... it's given an opportunity to educate the whole multidisciplinary team



- Neonatal Consultant,

Cambridge University Hospital, Addenbrooke's, UK

# Designed by clinicians

*for clinicians*

Nothing should come between the clinical team and the baby. The LifeStart is a platform that supports care **without impacting** the workflow in the clinical birthing area.

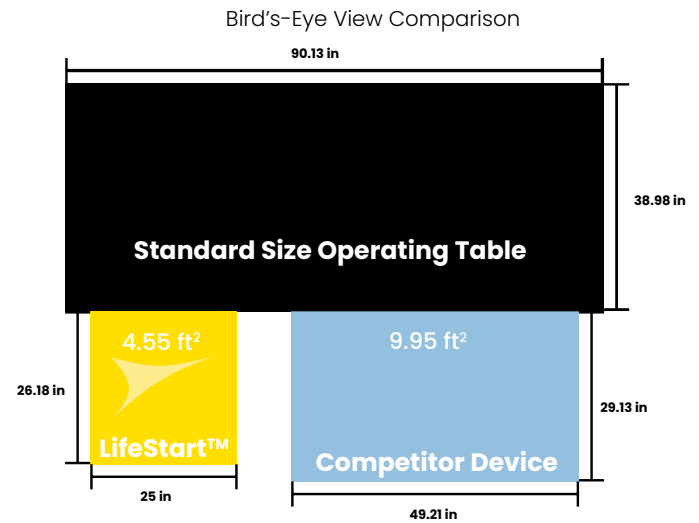
The LifeStart is

**~50% SMALLER**

than comparable devices  
and weighing only

**30 kg**

it is designed to be positioned and  
maneuvered with ease.



The **compact design** requires **minimal storage space** and allows the LifeStart to be moved through narrow corridors, hallways, and doorways. The small design enables it to be used in delivery rooms or operating rooms. **WARNING: The LifeStart is not suitable for patient transport.**



## Ergonomic platform

- Helps to facilitate family centred care
- Raised edges to secure the baby
- Stable platform to aid resuscitation<sup>7</sup>

## Height adjustable

- Secure height adjustment
- Hands free operation
- Designed for a variety of birthing situations

## Lockable 360° wheels

- Lockable casters for positioning
- Easy to move with multi-directional wheels
- Designed for stability

<b>Dimensions</b>	Footprint 65 x 64 cm Platform height 70 cm (lowest position from floor level)
<b>Weight</b>	30 kg
<b>Maximum patient load</b>	10 kg
<b>Maximum additional equipment load</b>	15 kg
<b>Power supply</b>	200 VA~ 50/60 Hz
<b>Input voltage</b>	230 V~
<b>Height Adjustment</b>	Platform height range from 70 cm to 110 cm from floor level
<b>Timer</b>	Audio alerts at 1, 2 & 3 minutes Battery operated using 4 × AA size 1.5 V alkaline cells (not supplied)

## References

1. Royal College of Obstetricians & Gynaecologists, *Scientific Impact Paper No. 14: Clamping of the Umbilical Cord and Placental Transfusion*, London, Royal College of Obstetricians & Gynaecologists, 2015.
2. *Born too soon: decade of action on preterm birth*. Geneva: World Health Organization; 2023. Licence: CC BY-NC-SA 3.0 IGO. (<https://creativecommons.org/licenses/by-nc-sa/3.0/igo/>) Cataloguing-in-Publication
3. Robledo, K.P., Tarnow-Mordi, W.O., Rieger, I., Suresh, P., Martin, A., Yeung, C., Ghadge, A., Liley, H.G., Osborn, D., Morris, J. and Hague, W., 2022. Effects of delayed versus immediate umbilical cord clamping in reducing death or major disability at 2 years corrected age among very preterm infants (APTS): a multicentre, randomised clinical trial. *The Lancet Child & Adolescent Health*, 6(3), pp.150–157.
4. Stenning FJ, Hooper SB, Kluckow M, Crossley KJ, Gill AW, Wallace EM, te Pas AB, LaRosa D and Polglase GR (2019) Transfusion or Timing: The Role of Blood Volume in Delayed Cord Clamping During the Cardiovascular Transition at Birth. *Front. Pediatr.* 7:405. doi: 10.3389/fped.2019.00405
5. Sawyer A, Ayers S, Bertullies S, et al. Providing immediate neonatal care and resuscitation at birth beside the mother: parents' views, a qualitative study. *BMJ Open* 2015;5:e008495. doi: 10.1136/bmjopen-2015-008495.
6. Hoyle, E. S., Hirani, S., Ogden, S., Deeming, J., & Yoxall, C. W. (2020). Quality improvement programme to increase the rate of deferred cord clamping at preterm birth using the Lifestart trolley. *Archives of Disease in Childhood - Fetal and Neonatal Edition*, 105(6), 652–655. <https://doi.org/10.1136/ARCHDISCHILD-2019-318636>
7. Hocq, C., Van Grambezen, A., Carkeek, K., Van Grambezen, B., Yoxall, C. W., Debiève, F., Piersigilli, F., & Danhaive, O. (2023). Implementing intact cord resuscitation in very preterm infants: feasibility and pitfalls. *European journal of pediatrics*, 182(3), 1105–1113. <https://doi.org/10.1007/s00431-022-04776-2>.

© Copyright Inspiration Healthcare Group 2024

MK-PHL-000069 Issue 2



### Manufactured by

SLE Ltd  
Commerce Park, Commerce Way,  
Croydon,  
CR0 4YL  
T +44 (0)330 175 0000  
E [info@inspiration-healthcare.com](mailto:info@inspiration-healthcare.com)  
W [inspirationhealthcaregroup.com](http://inspirationhealthcaregroup.com)